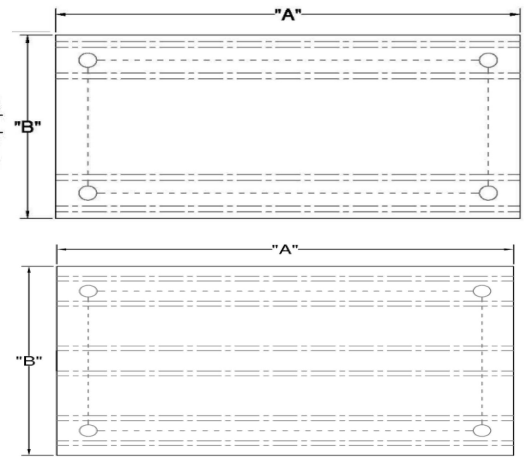
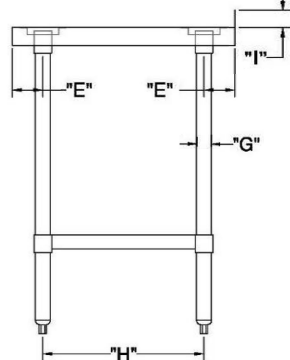
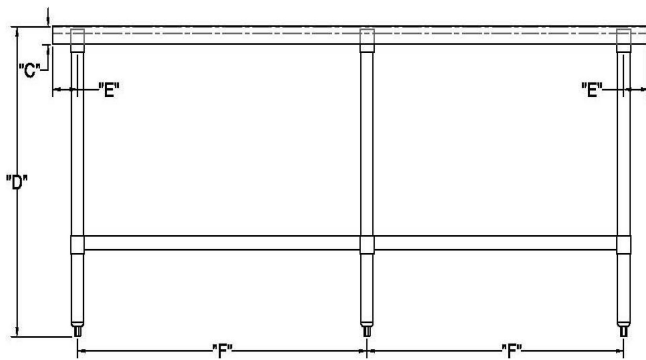


18 Gauge Stainless Steel Worktable with Splash Guard

- Made of 18-gauge, 304 stainless steel
- 18-gauge, type 430 stainless steel undershelf adds stability and some much-needed storage space
- 1" Adjustable stainless steel bullet feet for added stability
- A 2" (l) tall backsplash is included to keep your walls clean



ITEM	TABLE LENGTH (A)	TABLE DEPTH (B)	TABLETOP THICKNESS (C)	OVERALL HEIGHT (D)	OVERHANG (E)	Ø 8" ± 0.005" (G)	FRONT-BACK LENGTH (H)	SIDE-CTR LENGTH (F)
SWWTS-2484-2R-318	84"	24"	2"	34"	3"5/16"	1"5/8"	17"3/8"	38"11/16"
SWWTS-2496-2R-318	96"	24"	2"	34"	3"5/16"	1"5/8"	17"3/8"	44"11/16"
SWWTS-3084-2R-318	84"	30"	2"	34"	3"5/16"	1"5/8"	22"1/8"	38"11/16"
SWWTS-3096-2R-318	96"	30"	2"	34"	3"5/16"	1"5/8"	22"1/8"	44"11/16"